



Science

Seasonal Changes (Autumn and Winter)

A cartoon illustration of a winter scene. In the background, there are snow-covered trees and a yellow house with a brown roof and blue windows. The foreground is a snowy landscape with a path leading towards the house. The sky is light blue with white clouds.

Seasonal Weather

Winter

Aim

- I can observe and describe the weather in winter.
- I can collect and record data about the weather in winter.

Success Criteria

- I can watch the weather carefully.
- I can describe the weather in winter.
- I can collect data about the weather, temperature, rainfall and wind direction.
- I can write and draw the data I have collected.

Winter

Think about winter with your partner. See if you can answer these questions:

What happens in winter?

What's the weather like?

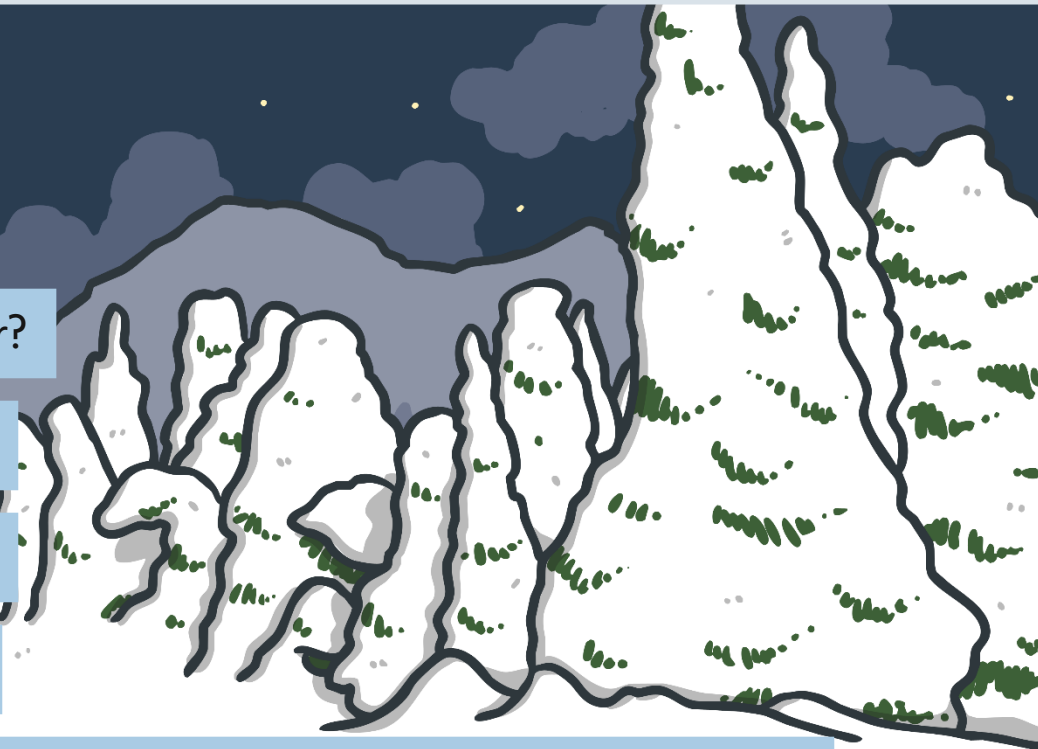
What do you wear in winter?

What do you eat in winter?

What do you see in winter?

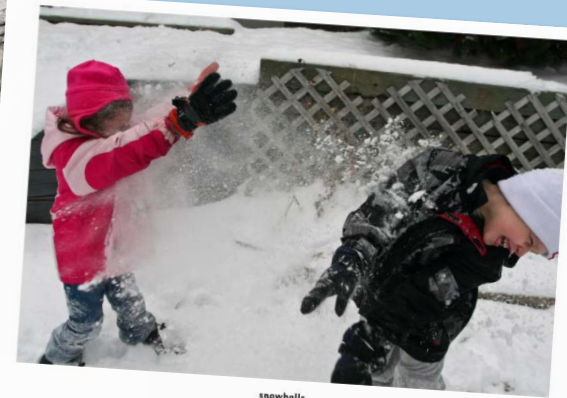
Have you ever seen snow?

Have you ever played in the snow? What was it like? How did it feel?



Winter Photos

Look at the Winter Photos and think about these questions:



1. Does it always snow in the United Kingdom in winter?
2. Does it have to snow to be winter?

Measuring the Weather



Can you remember how we are measuring the weather?



How are we measuring the temperature?

- What equipment are we using?
- What units are we measuring in?



How are we measuring the rainfall?

- What equipment are we using?
- What units are we measuring in?



How are we measuring the wind direction?

- What equipment are we using?
- What units are we measuring in?



Weather Report



Weather Report

Date: _____ Season: _____

Weather Today:

What changes have people had to make to adapt to the weather conditions?

Weather Chart:

Day	Monday	Tuesday	Wednesday	Thursday	Friday
Date:					
Weather Symbol					
Temperature (°C)					
Rainfall (mm)					
Wind Direction (N,S,E,W)					

twinkl planit Science Year 1 Seasons Changes Across In Year 1 Seasonal Weather Autumn Lesson 2

Weather Symbols Prompt Sheet

sunny	sunny spells	cloudy
thunder and lightning	light rain	heavy rain
sleet	hail	light snow
heavy snow	MIST mist	overcast
FOG fog	wind direction	

twinkl planit Science Year 1 Seasons Changes Across In Year 1 Seasonal Weather Autumn Lesson 2

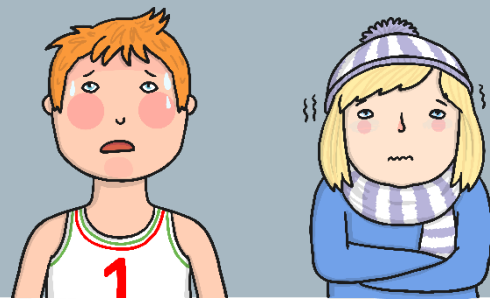
Winter Weather



What has the weather been like this week?



What has the temperature been like?



What clothes have you been wearing?



Aim



- I can observe and describe the weather in winter.
- I can collect and record data about the weather in winter.

Success Criteria

- I can watch the weather carefully.
- I can describe the weather in winter.
- I can collect data about the weather, temperature, rainfall and wind direction.
- I can write and draw the data I have collected.

